



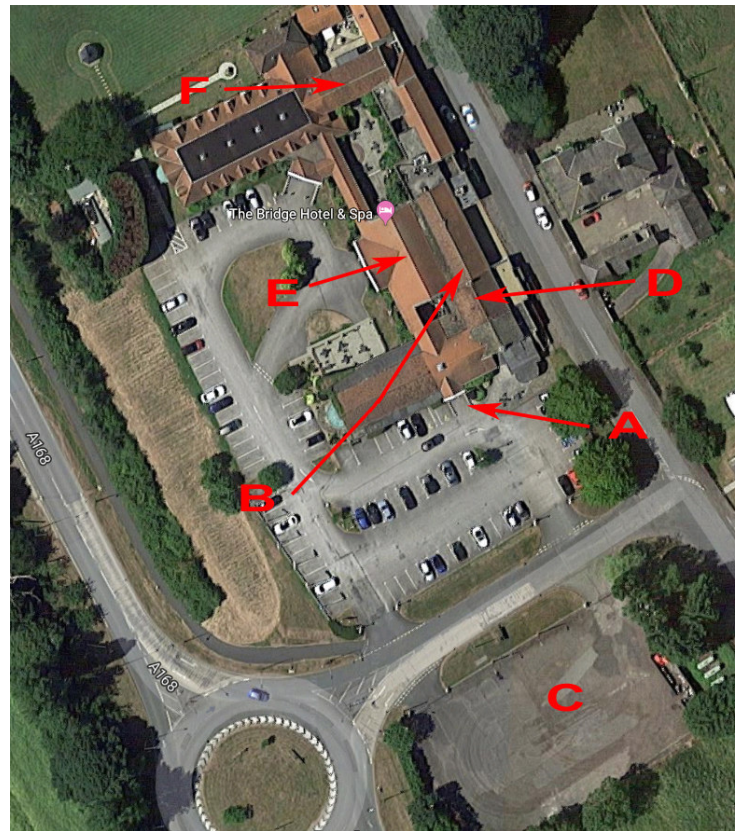
Wetherby Classic Car Club

www.wetherbyclassiccarclub.org.uk

MEETING LOCATION & VENUE DETAILS



The Bridge
Location Maps



NOTES

The Bridge is not directly accessible from the A1(M). Please use one of the exits marked by arrows onto the A168.

Keys to the Hotel itself.

- A** Entrance for Club Meetings
- B** The Byron Room (to the left of the main Bar) where we hold our meetings
- C** The overflow car park used for our Concours Evening (Sometimes used when the Hotel has other functions)
- D** The main hotel bar
- E** The Courtyard Restaurant
- F** The Walshford Suite where we sometimes hold our Christmas Dinner. (May also be used by us if the Hotel needs the Byron Room for a special function)